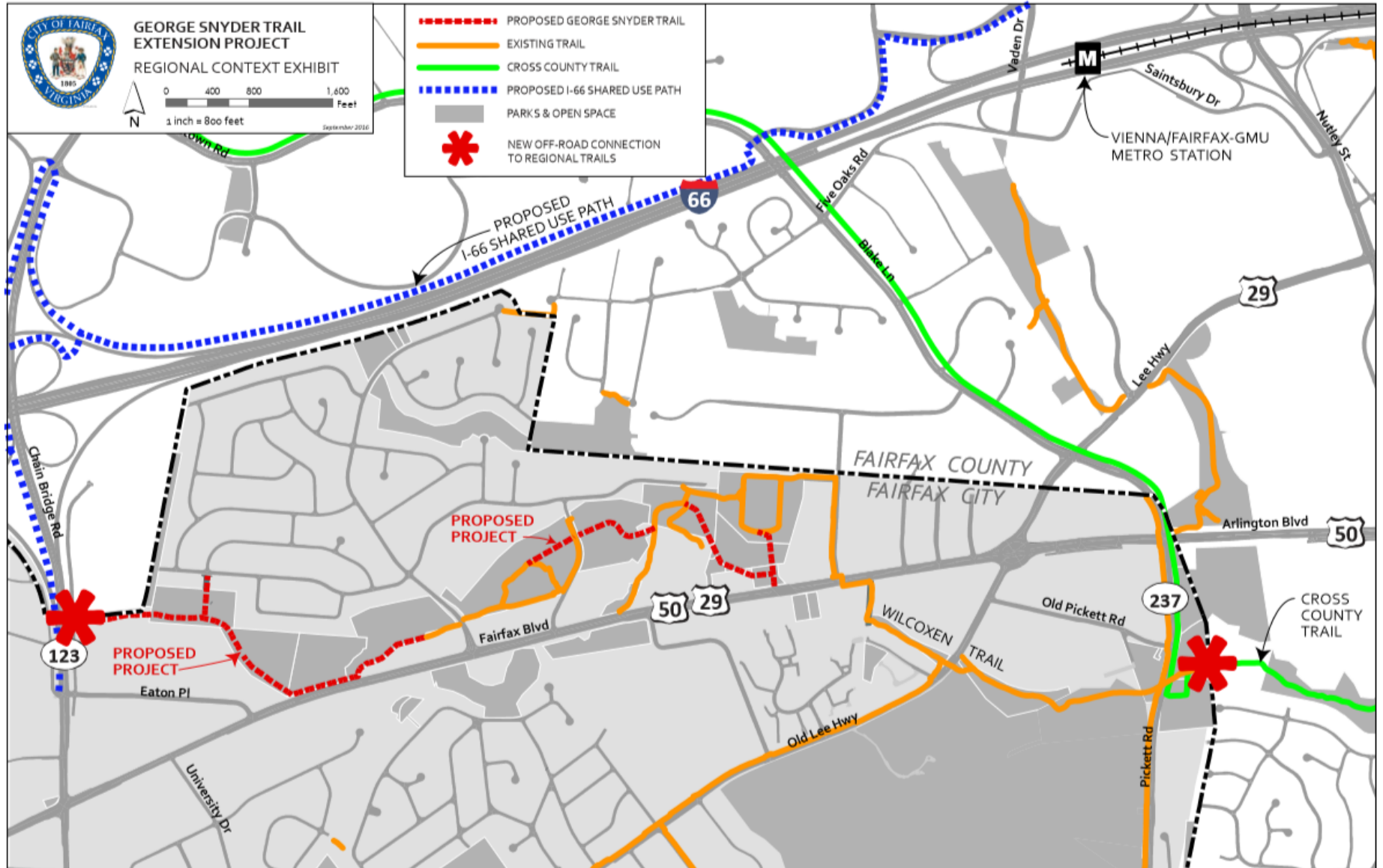
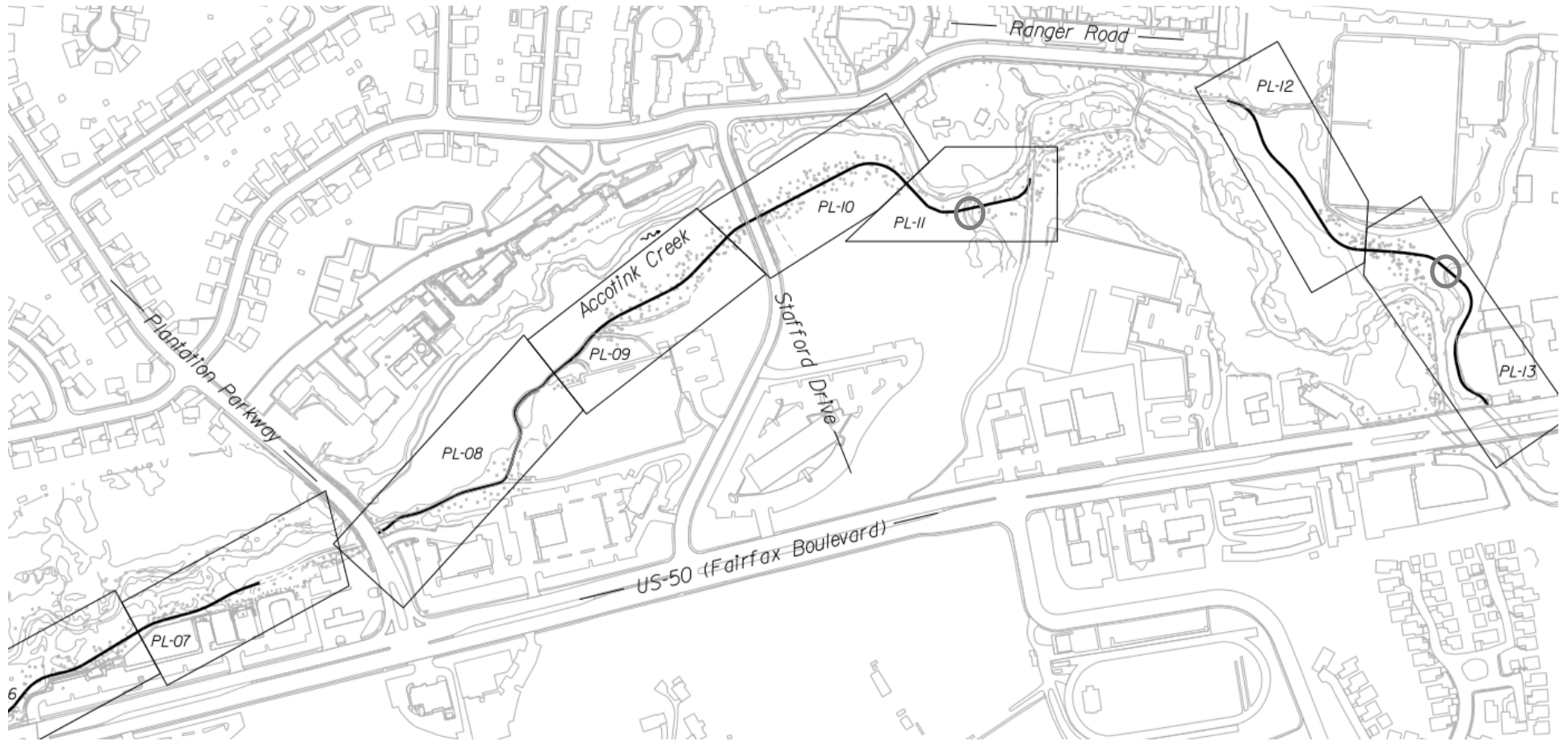


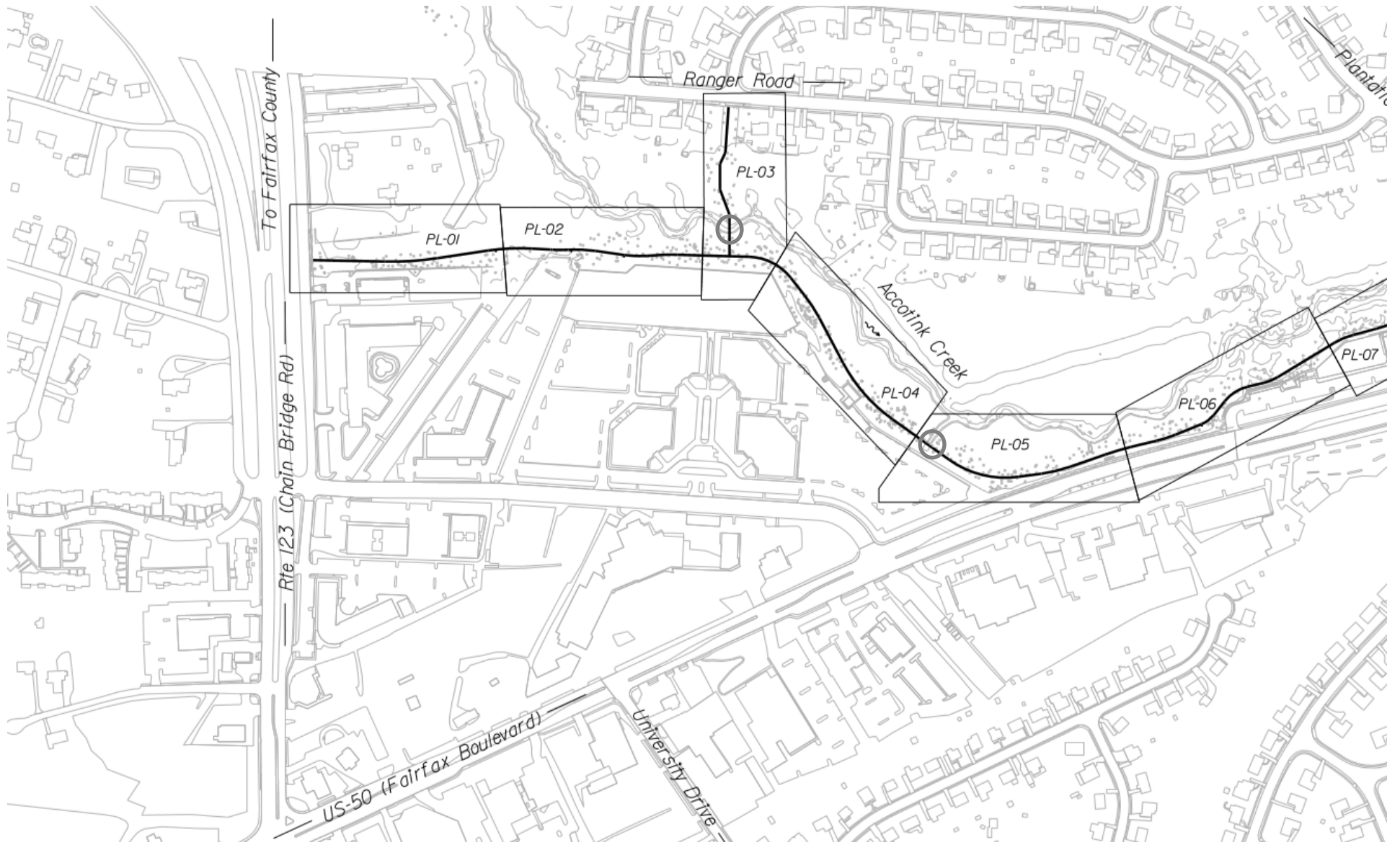
# George Snyder Trail Property Maps



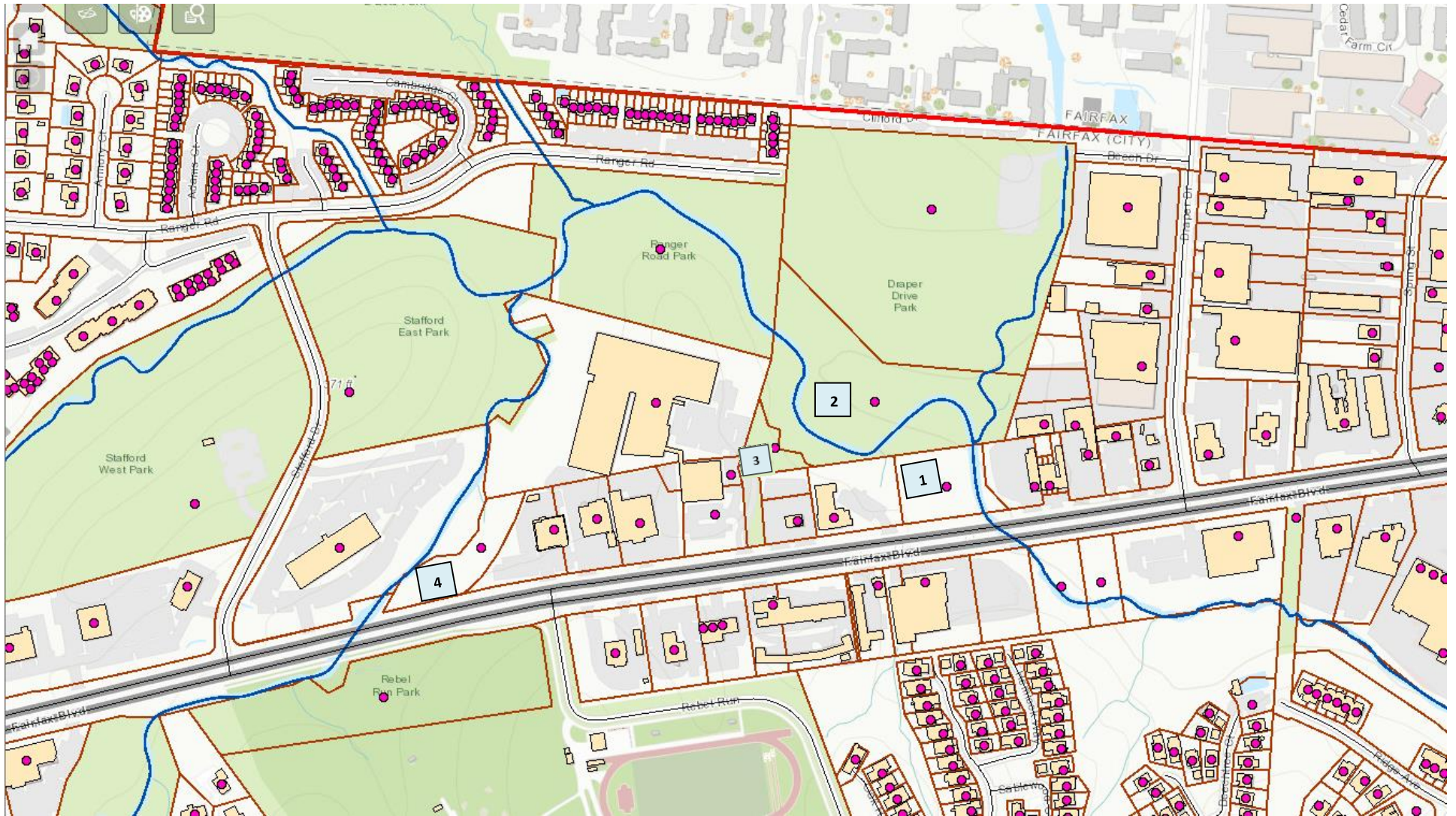
Proposed route map from [City of Fairfax](http://www.cityoffairfax.com) website



Proposed route map from [30% plan](#) eastern portion

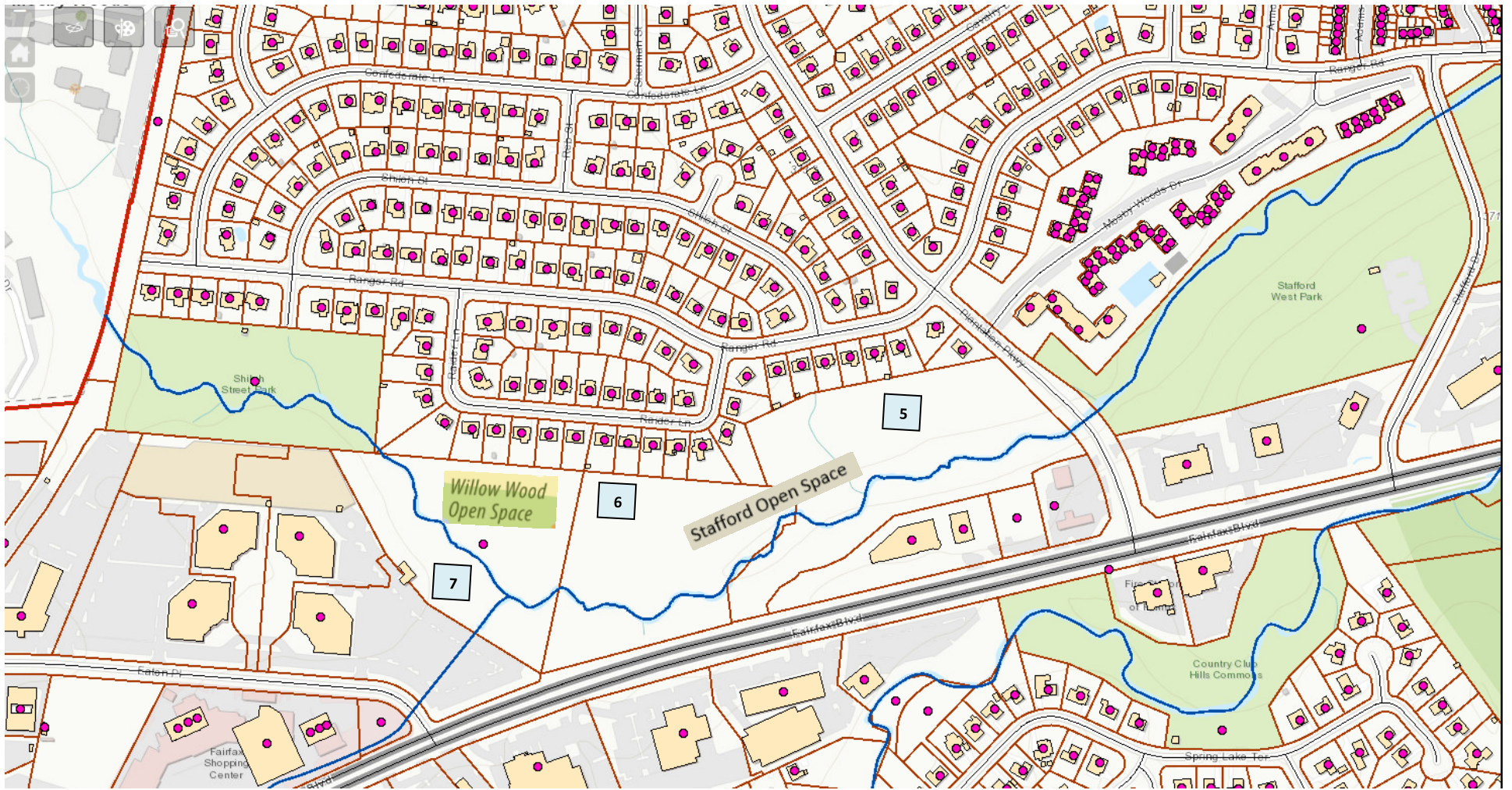


Proposed route map from [30% plan](#) western portion



Parcel ownership eastern portion

1. City of Fairfax, 9830 Fairfax Blvd., light industrial ("mainly classified as N/A"), Parcel ID 48 3 02 021
2. City of Fairfax, 9856 Fairfax Blvd., heavy industrial ("mainly classified as N/A"), Parcel ID 48 3 02 004 B
3. City of Fairfax, 9858 Fairfax Blvd., heavy industrial ("mainly classified as Parks"), Parcel ID 48 3 02 004 C
4. City of Fairfax, 9960 Fairfax Blvd., commercial retail ("mainly classified as Comm. F.P."), Parcel ID 48 3 14 001 B



Parcel ownership central portion

5. City of Fairfax, 3300 Stafford Drive, Split Zoned (CR/IL) ("mainly classified as Parks"), Parcel ID 47 4 02 001 A

6. City of Fairfax?, no listing on tax map

7. City of Fairfax?, 10270 Fairfax Blvd., no listing on tax map



Parcel ownership western portion

- 8. City of Fairfax, 10320 Ranger Road, residential high ("mainly classified as N/A"), Parcel ID 47 4 02 000 E
- 9. Fairfax 123 Hotel, 10402 Eaton Pl, commercial retail ("mainly classified as N/A"), Parcel ID 47 4 02 000 F
- 10. Fairfax Chain Bridge Hotel, 3521 Chain Bridge Road, commercial retail ("mainly classified as N/A"), Parcel ID 47 4 02 003 B
- 11. City of Fairfax, 10500 Chain bridge Road, commercial retail ("mainly classified as N/A"), Parcel ID 57 2 02 016